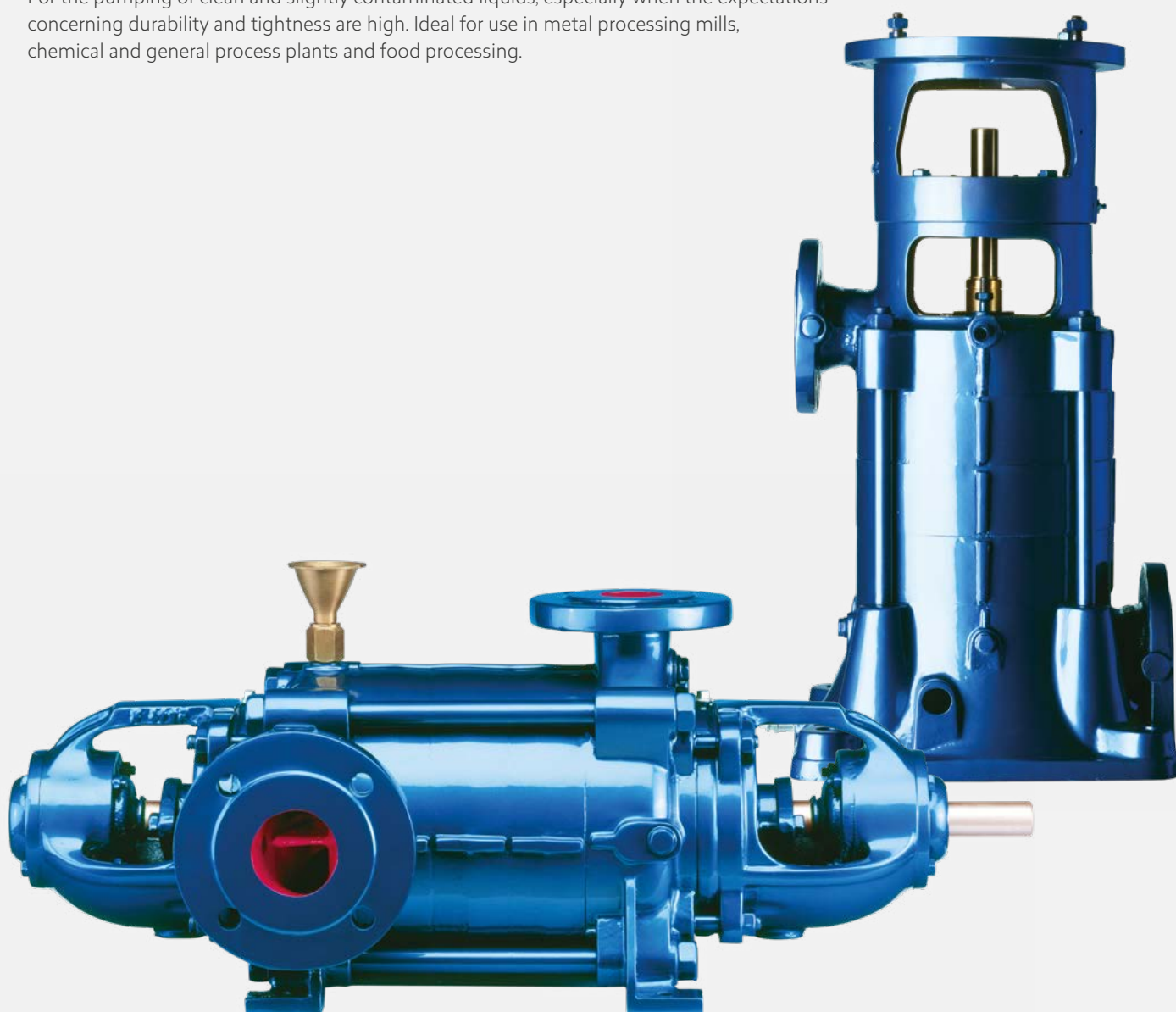


HIGH PRESSURE CENTRIFUGAL PUMPS

GH(S) / GV(S)

Multistage high pressure centrifugal pump in horizontal (GH) or vertical (GV) construction, for non-selfpriming or selfpriming (S) operation

For the pumping of clean and slightly contaminated liquids, especially when the expectations concerning durability and tightness are high. Ideal for use in metal processing mills, chemical and general process plants and food processing.



- high efficiency
- low-noise operation
- amply dimensioned walls and chambers
- wide choice of special materials of construction
- various individual sealing options
- adaptability to many different operating conditions

GH(S) / GV(S)

LIQUIDS

Chemically and – to some extent – physically aggressive and abrasive liquids with a requirement for special materials and individual sealing methods.

MATERIALS

Special material according to individual requirements, e. g. Duplex, Super-Duplex or other stainless steel types or alloys

TECHNICAL DATA

● Capacity	up to 500 m ³ /h (2.200 USGPM)
● Head	up to 400 m (1.312 ft)
● Speed	up to 3.500 rpm
● Temperature	up to 160 °C (320 °F)
● Casing Pressure	up to 40 bar
● Shaft Sealing	Cooled or uncooled gland packing, single or double mechanical seals, cartridge seals as well as choice of accessories and peripheral arrangements.*
● Lubrication	Antifriction bearings grease or oil lubricated Friction bearing lubricated by pumping liquid
● Flange	Discharge branch: from DN 32 to DN 150 Suction flange: PN 16 to PN 40 Discharge flange: PN 16 to PN 40 BS and ANSI flange is also available

* according to product profile